

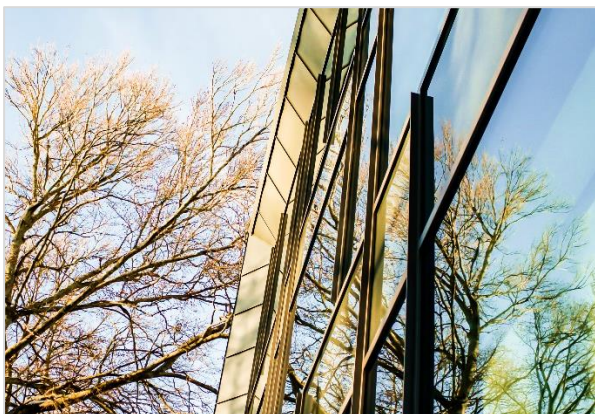
The Diocese of Västerås

200 m² ConverLight[®] Static were installed in order to provide increased indoor comfort without losing the architectural freedom of design



Increased comfort

Everyone needs daylight in order to perform and function their best. Thereby, space and interior are not the only important factors in creating a comfortable and healthy working environment, indoor climate and natural light are equally important.



Perfect indoor climate

ConverLight[®] creates a nice and healthy indoor environment by providing necessary daylight entry, UV protection, comfortable temperature and an open view. This increases the well-being and productivity level of the occupants.



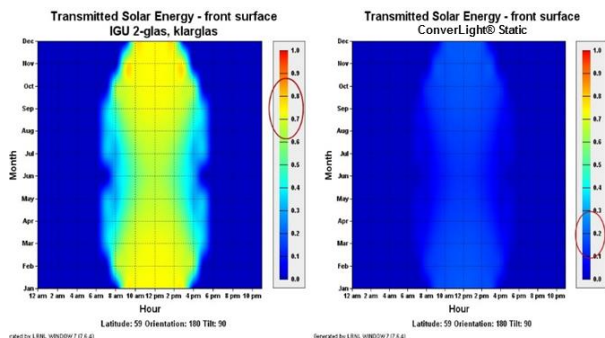
"It feels like I'm working inside of a painting every day"
– Isabel Karlsson, Bishop's Secretary at The Diocese of Västerås

Save energy and money

ConverLight® Static reduces undesired heat radiation and eliminates undesired cold drafts, which results in a more energy and cost effective building.



Comparison of solar energy transmission



IGU 2-glass (clear)
LT: 80-86%
ST: 610-880 W/m²

ConverLight® Static
LT: 46-52%
ST: 100-300 W/m²



Reduced environmental impact

The energy-saving features of ConverLight® contribute to meeting the requirements of environmental certifications such as BREEAM, Green Building, Swan and LEED.

→ The property's annual CO₂ emissions are estimated to decrease by 18 tonnes solely by the installation of ConverLight® Static.

